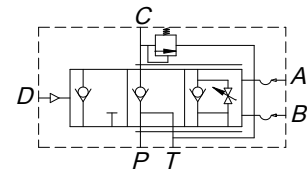


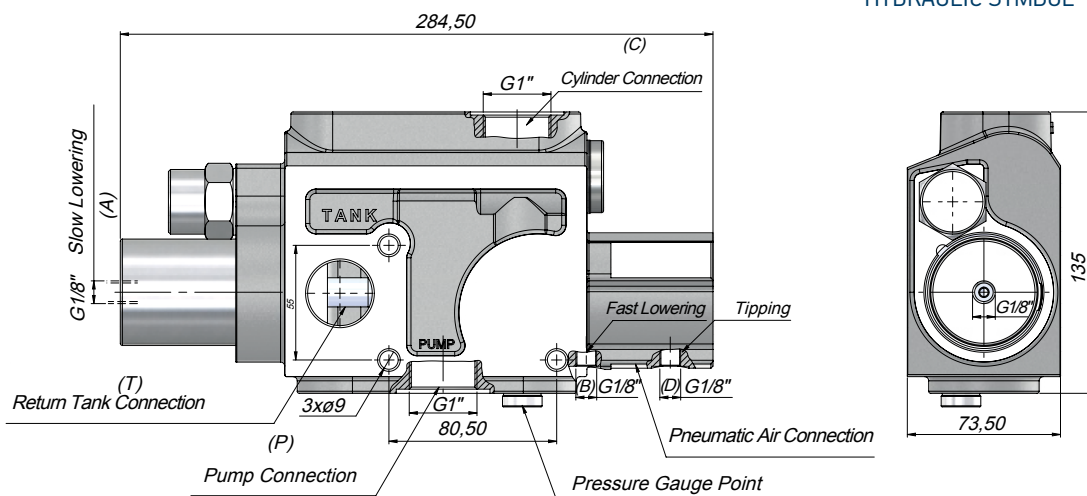


Pneumatically operated 3 position tipping valve for semi and end tipper applications.

- Adjustable pressure relief valve preset to 140 BAR.
- Load holding check on cylinder port.
- 1/8" BSP port for pressure gauge.
- Pad mount directly to TRMNF series rear cab tanks.



HYDRAULIC SYMBOL



Code	Flow Rate (L/Min)	Max. Working Pressure (BAR)	Fluid Temperature (°C)	Operating Viscosity Range (cSt)	Pneumatic Working Pressure (BAR)	Weight (Kg)
VHD180	180	350	-10 – +80	-12 – 100	7-12	8

Spare parts

Tank mounting kit	MK013
Seal kit	HTSK013

