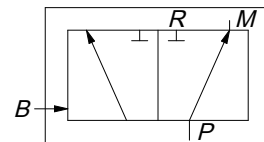


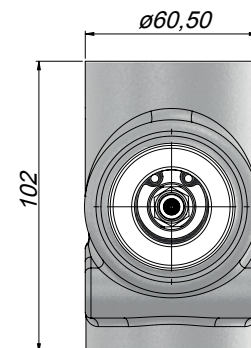
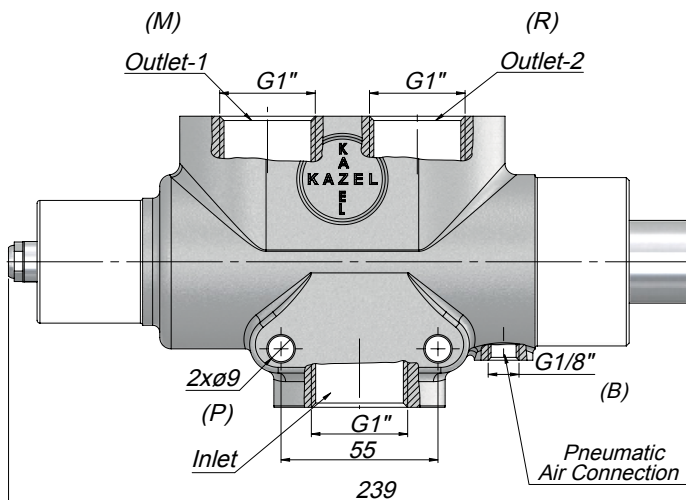


Pneumatically operated diverter valve to support 2 pressure lines.

- Ideal for truck & dog or semi tipping applications.
- Flow rate up to 250L/Min.
- 350BAR maximum working pressure.
- Open centred design to prevent pressure shocks.



HYDRAULIC SYMBOL



Code	Flow Rate (L/Min)	Max. Working Pressure (BAR)	Fluid Temperature (°C)	Operating Viscosity Range (cSt)	Pneumatic Working Pressure (BAR)	Weight (Kg)
V100D	250	350	-10 – +80	-12 – 100	7-12	6

Recommended minimum filtration 25µm

Spare parts	
Mounting kit	MK018
Seal kit	HTSK018

