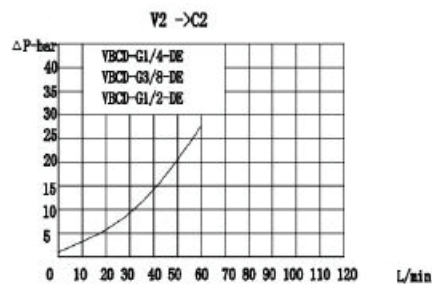
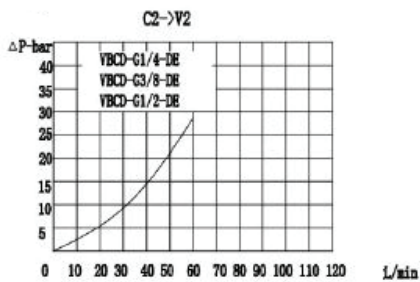
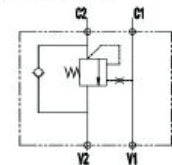


Inline single over centre valve used as a load holding device and to prevent loads from runaway in one direction.

- Standard setting at 300BAR.
- Heavy duty steel body.
- Mounted inline in any system.
- Internal pilot.



Hydraulic Schematic

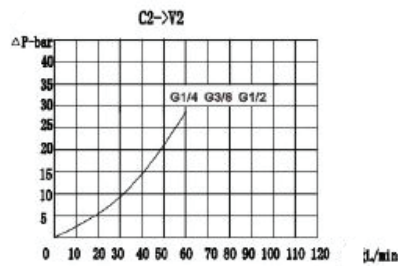
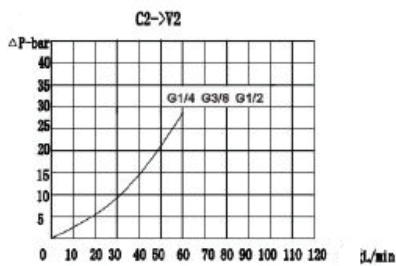


Code	Ports (BSPP)	Flow (L/Min)	Max Pressure (BAR)	Pilot Ratio
VBCD1/4SEA	1/4"	20	350	4.5:1
VBCD3/8SEA	3/8"	40	350	4.5:1
VBCD1/2SEA	1/2"	60	350	4.5:1

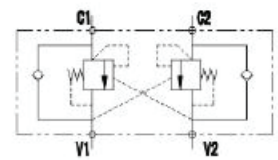


Inline single over centre valve used as a load holding device and to prevent loads from runaway in both directions.

- Standard setting at 300BAR.
- Heavy duty steel body.
- Mounted inline in any system.
- Internal pilot.



Hydraulic Schematic



Code	Ports (BSPP)	Flow (L/Min)	Max Pressure (BAR)	Pilot Ratio
VBCD1/4DEA	1/4"	20	350	4.5:1
VBCD3/8DEA	3/8"	40	350	4.5:1
VBCD1/2DEA	1/2"	60	350	4.5:1
VBCD3/4DEA	3/4"	95	350	4.5:1