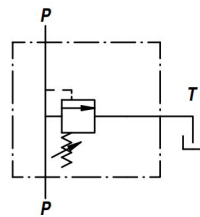




Inline pressure relief valve used to set system pressures and protect other components in the system from overload.

- Easily adjustable.
- Heavy duty steel body.
- Mounted inline in any system.

Hydraulic Schematic



Code	Ports (BSPP)	Flow (L/Min)	Max Pressure (BAR)
VMP-1/4	1/4"	30	400
VMP-3/8	3/8"	40	400
VMP-1/2	1/2"	70	400
VMP-3/4	3/4"	110	400
VMP-1	1"	150	300