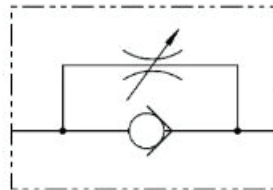




**Needle valves used to reduce the flow in a single direction.**

- Free reverse flow with check valve.
- Easily adjustable.
- Mounted inline in any system.
- Valve bodies manufactured from steel.

#### Hydraulic Schematic



| Code     | Ports (BSPP) | Flow (L/Min) | Pressure (BAR) | Overall Length (mm) | Overall Height (mm) |
|----------|--------------|--------------|----------------|---------------------|---------------------|
| STU-G1/4 | 1/4"         | 12           | 400            | 73                  | 72                  |
| STU-G3/8 | 3/8"         | 30           | 400            | 82                  | 80                  |
| STU-G1/2 | 1/2"         | 50           | 400            | 98                  | 92                  |
| STU-G3/4 | 3/4"         | 85           | 400            | 112                 | 100                 |
| STU-G1   | 1"           | 150          | 320            | 142                 | 122                 |