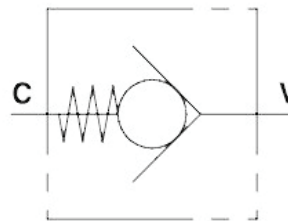




Inline check valves used to allow free flow in one direction and block flow in the other direction.

- Heavy duty steel body.
- Maximum pressure up to 500 BAR.

Hydraulic Schematic



Code	Ports (BSPP)	Flow L/Min)	Max Pressure (BAR)	Overall Length (mm)
VU-G1/4	1/4"	30	500	62
VU-G3/8	3/8"	45	500	68
VU-G1/2	1/2"	70	500	77
VU-G3/4	3/4"	110	400	88
VU-G1	1"	160	350	105
VU-G1 1/4	1-1/4"	210	350	130
VU-G1 1/2	1-1/2"	320	350	138
VU-G2	2"	460	250	160