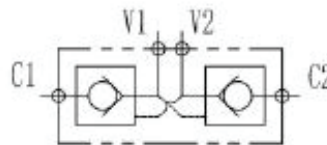


Inline pilot operated check valves used to allow free flow in one direction and block flow in the other direction until the pilot pressure is applied.

- Heavy duty steel body.
- Mounted inline to double acting cylinders.
- Maximum pressure 350 BAR.
- Valve bodies manufactured from steel.

Hydraulic Schematic



Code	Ports (BSPP)	Flow (L/Min)	Max Pressure (BAR)	Cracking Pressure (BAR)	Pilot Ratio
VBPDEL-1/4	1/4"	20	350	3.5	1:4.5
VBPDEL-3/8	3/8"	50	350	3.5	1:4
VBPDEL -1/2	1/2"	80	300	3.5	1:4

